



SKINNEY-PINGANES HF

BATTERÍÐ | ARKITEKTAR

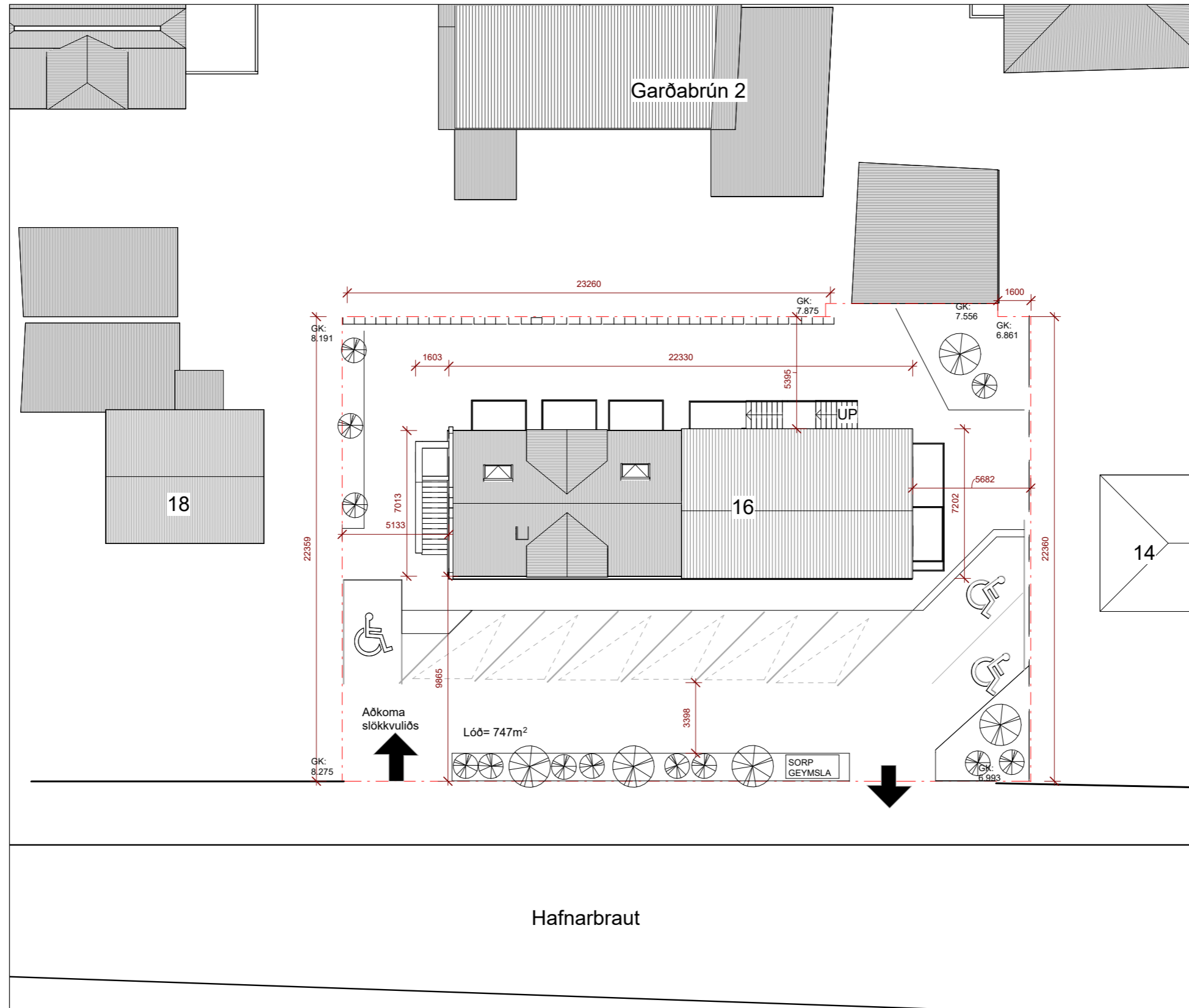
HAFNARBRAUT 16, HÖFN BREYTINGAR

ÚTG.-6

2215-FRUMDRÖG-6

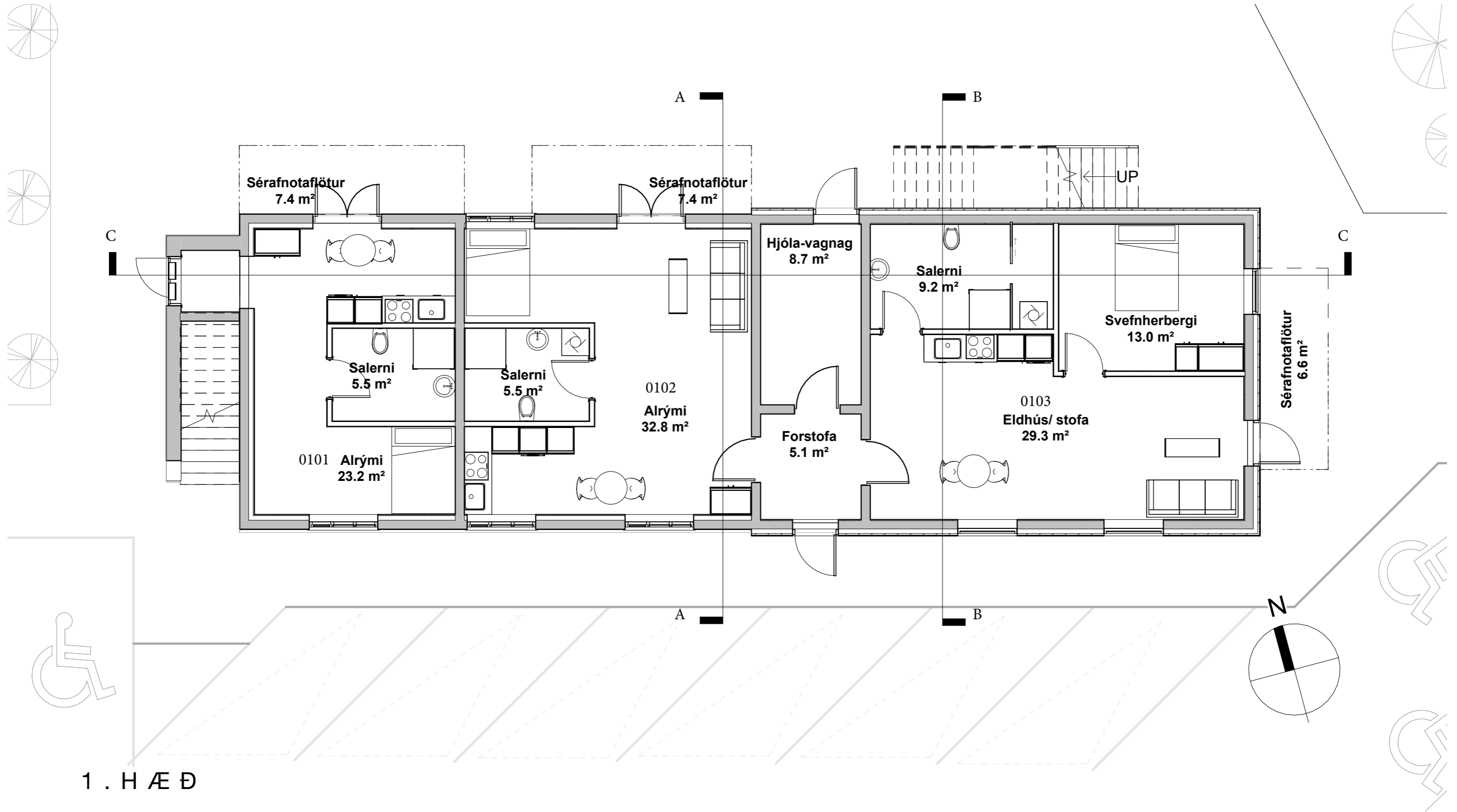
24.03.2023

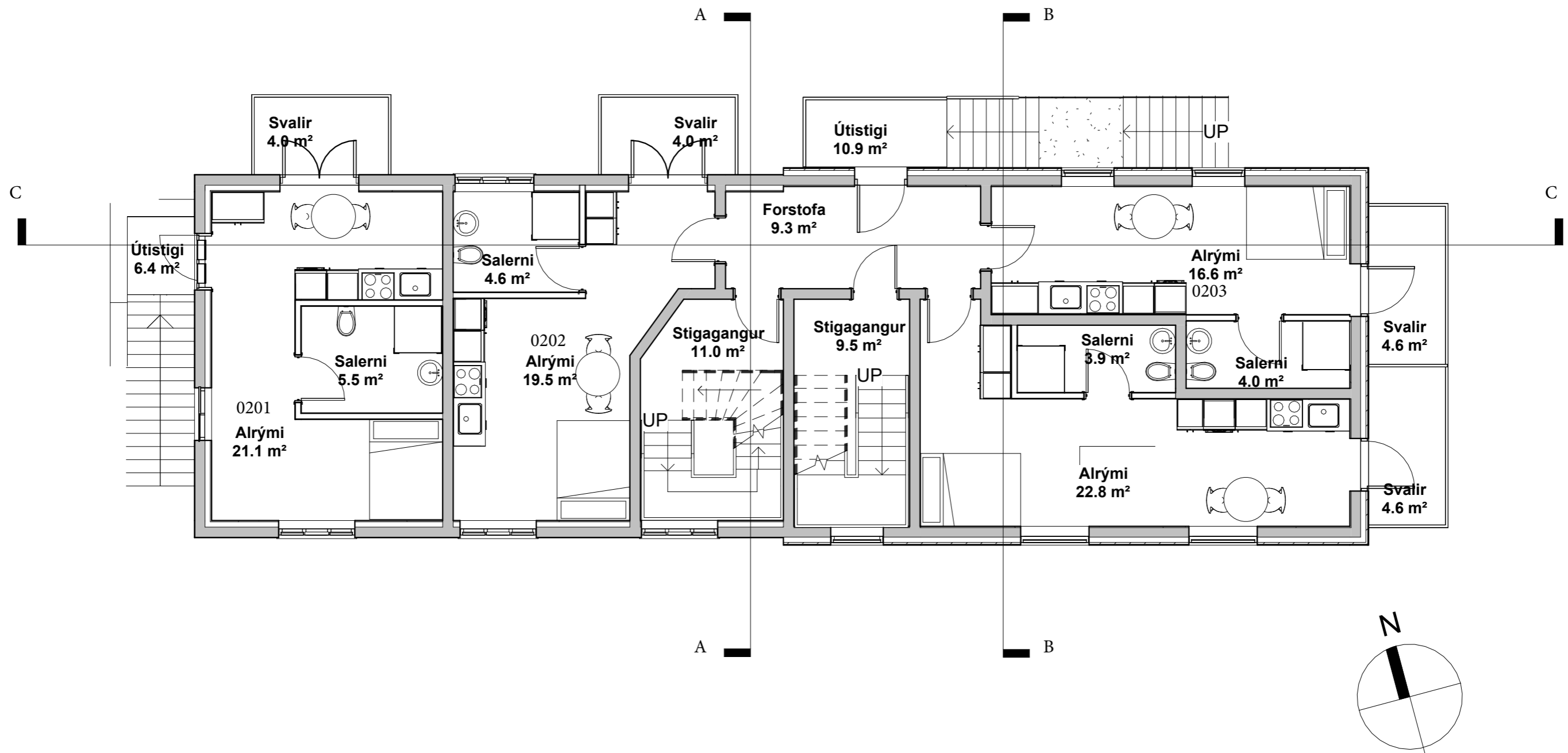
1



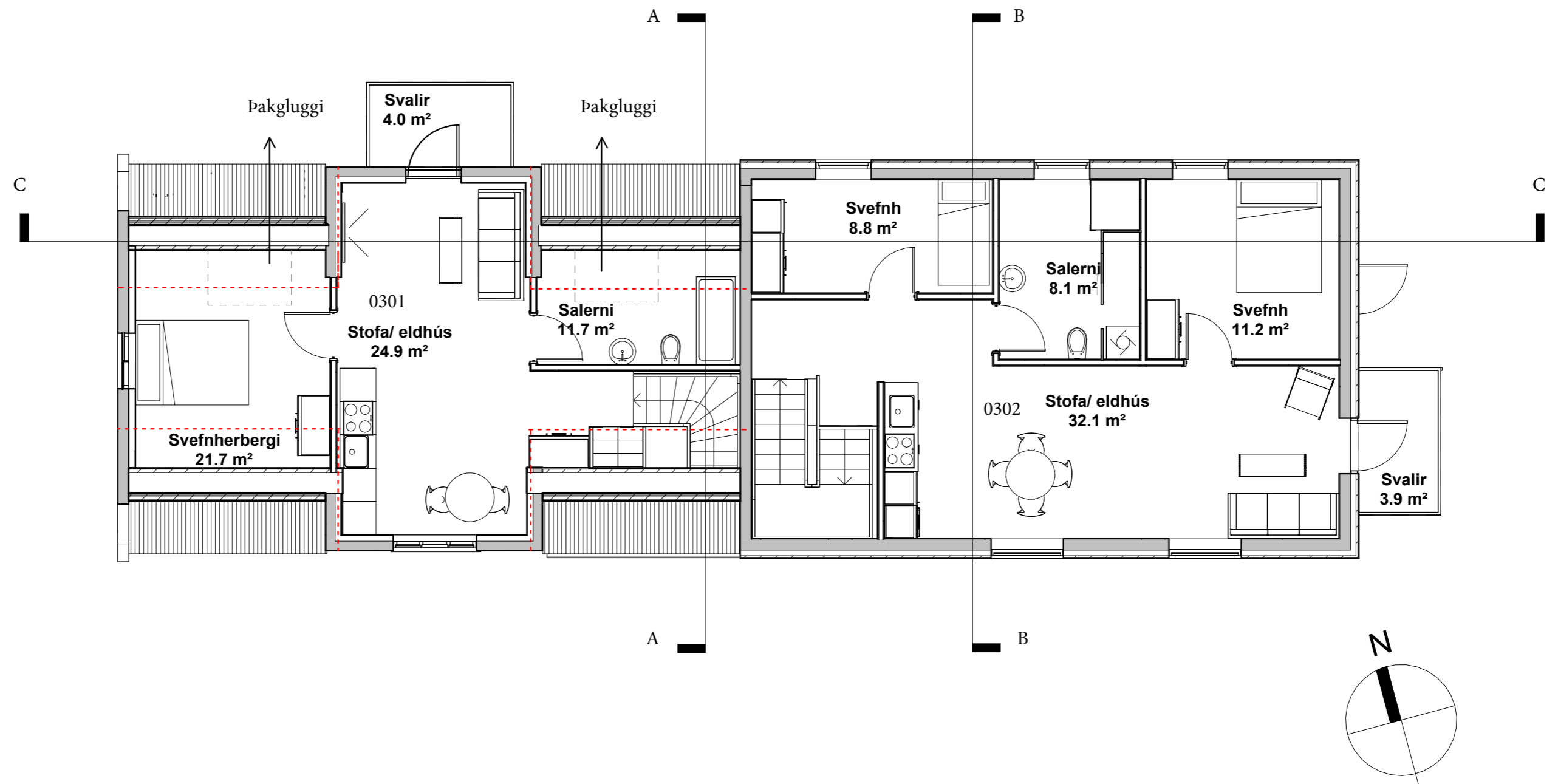
A F S T Ö Ð U M Y N D







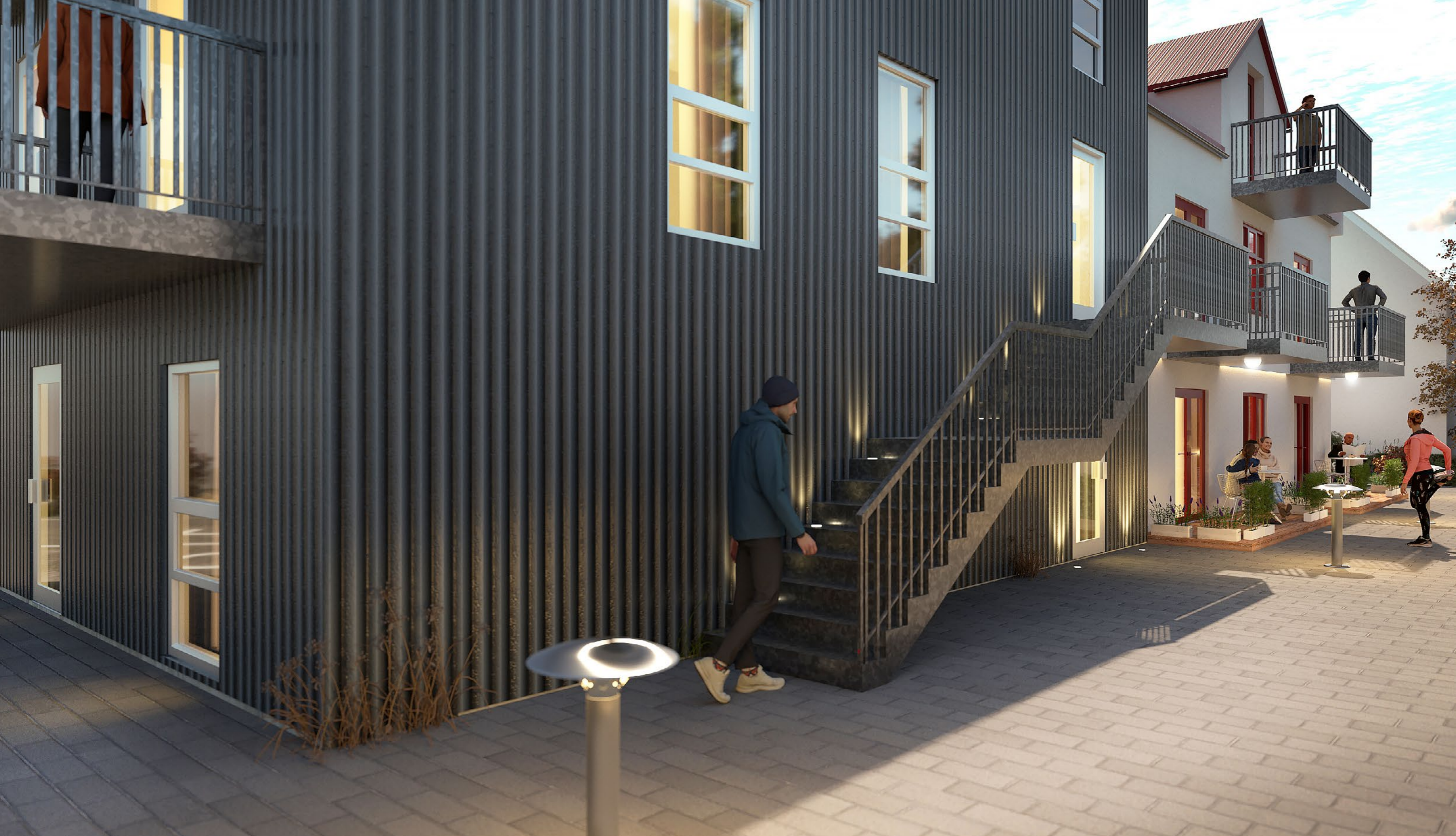
2 . H Æ Ð



3 . H Æ Ð

Rými	Stærð brúttó	
1hæð :		
Íbúð 0101	33.24m ²	
Íbúð 0102	44.71m ²	
Íbúð 0103	61.91m ²	
hjóla/vagna geymsl	10.58m ²	
forstofa	6.64m ²	
		157.08m ²
2hæð:		
Íbúð 0201	33.26m ²	
Íbúð 0202	28.77m ²	
Íbúð 0203	26.17m ²	
Íbúð 0204	32.61m ²	
forstofa	12.02m ²	
stigi íbúð 301	13m ²	
stigi íbúð 302	11.46m ²	
		157,29m ²
3hæð:		
Íbúð 0301	41.68m ²	
Íbúð 0302	72.51m ²	
		114,19m ²
Samtals		428,56m ²

S T Æ R ð I R







ÚTLIT
SUÐUR



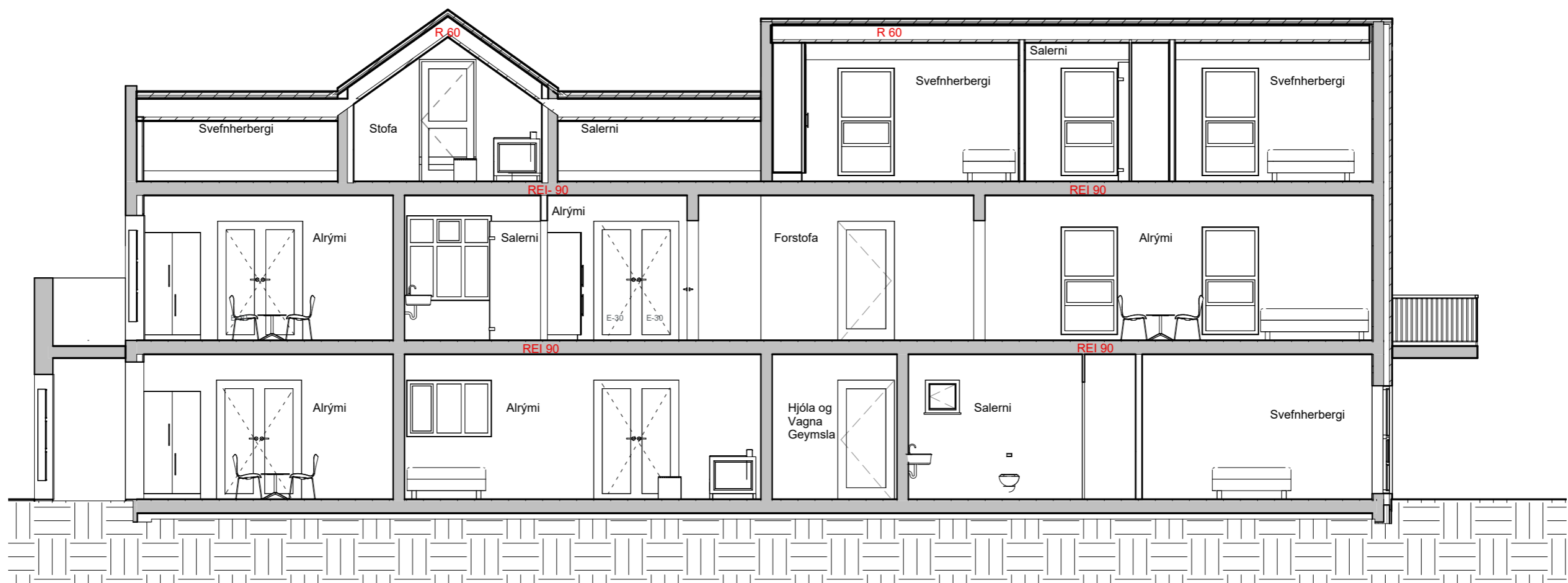
ÚTLIT
NORÐUR



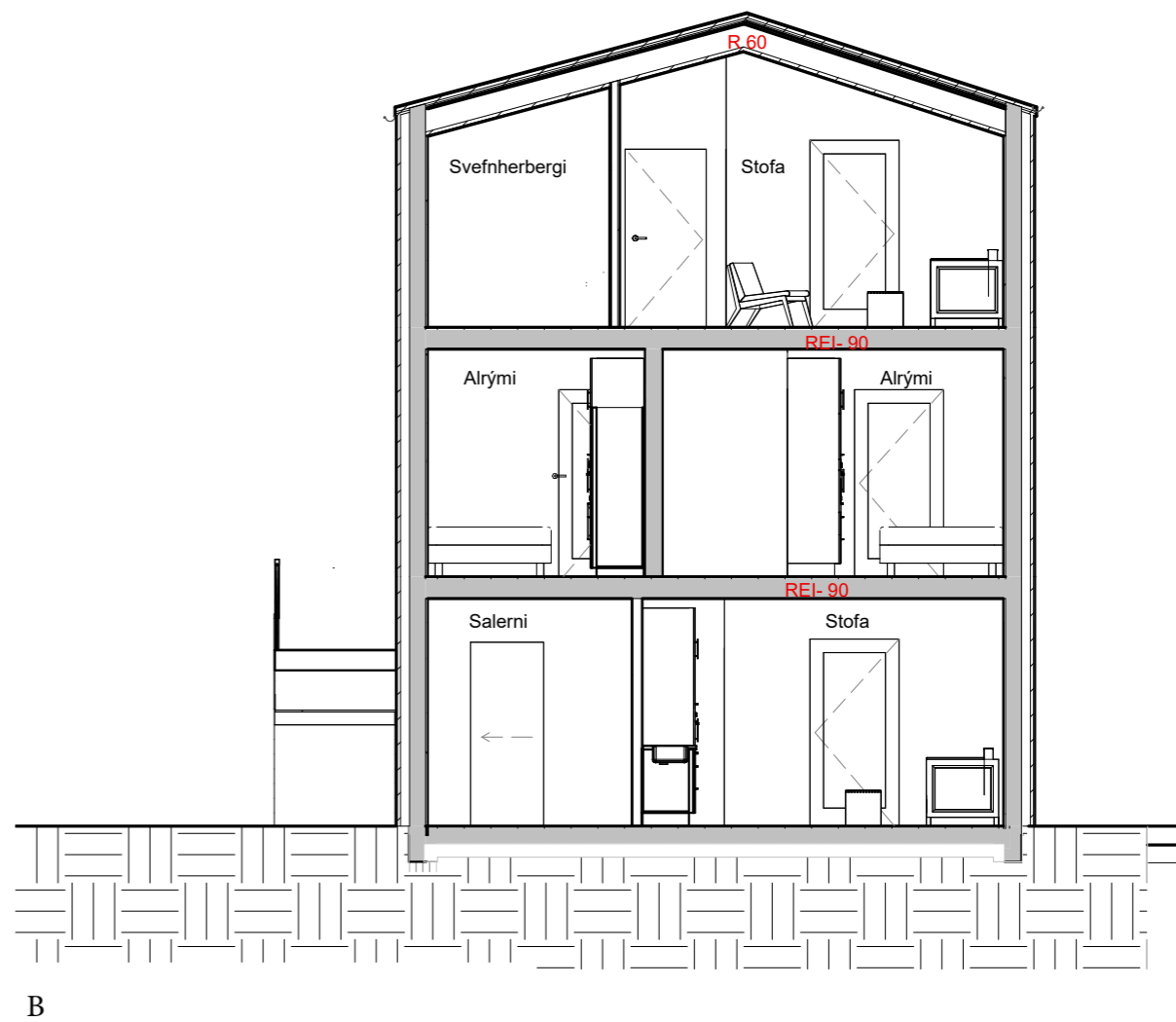
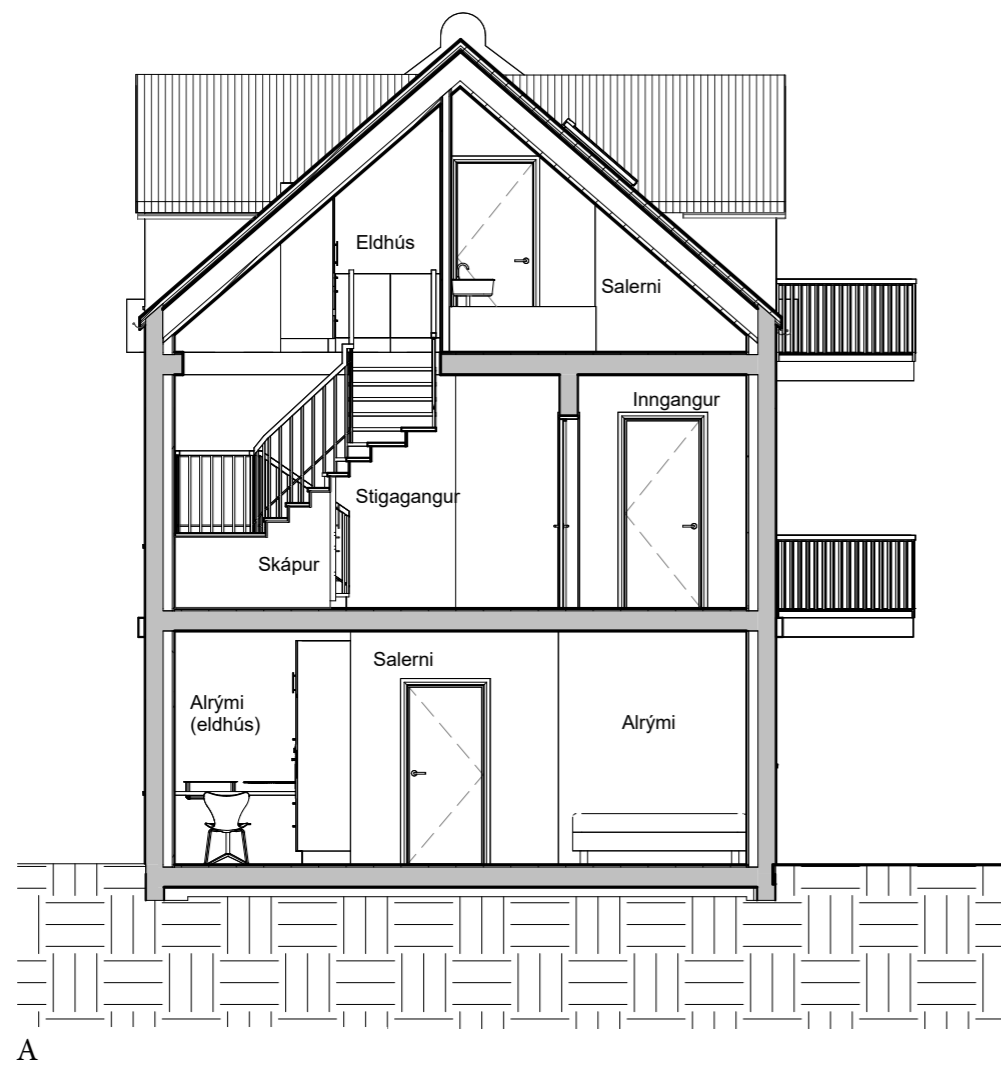
ÚTLIT
VESTUR



ÚTLIT
AUSTUR

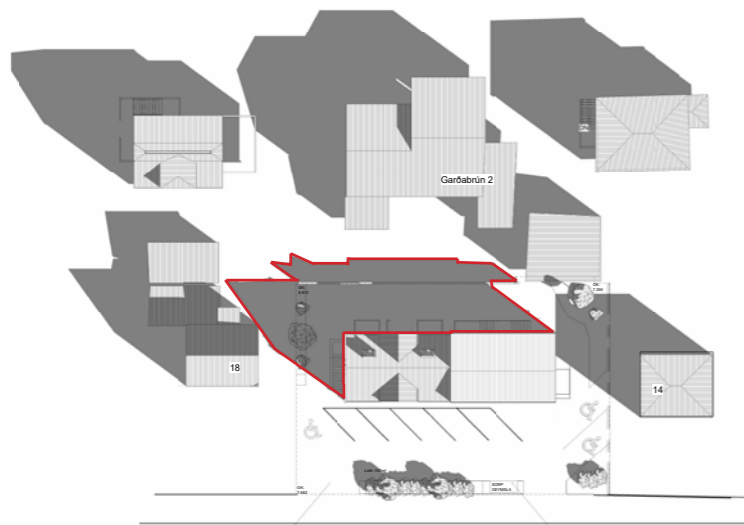


SNID C



S N I Ð
A OG B

Samantekt af skuggarannsókn



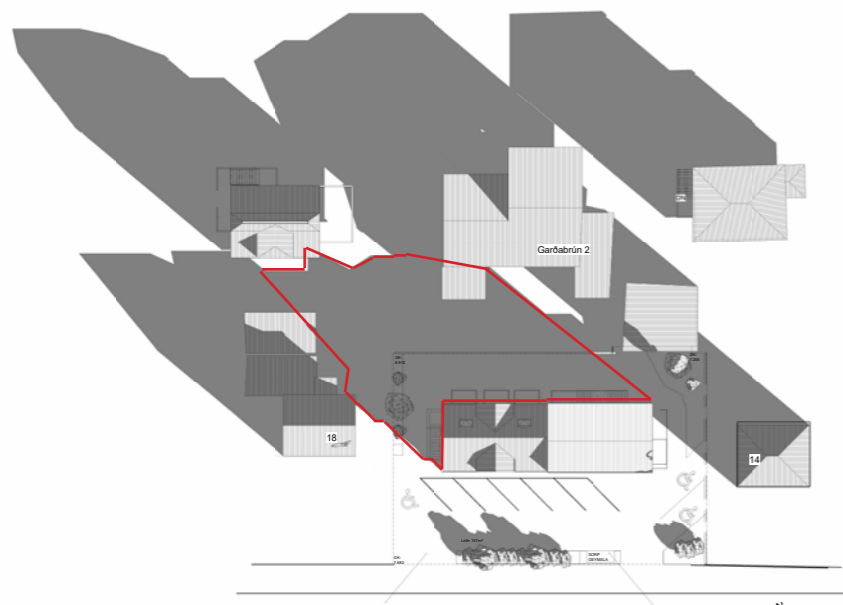
20. ágúst kl 10



20. ágúst kl 13



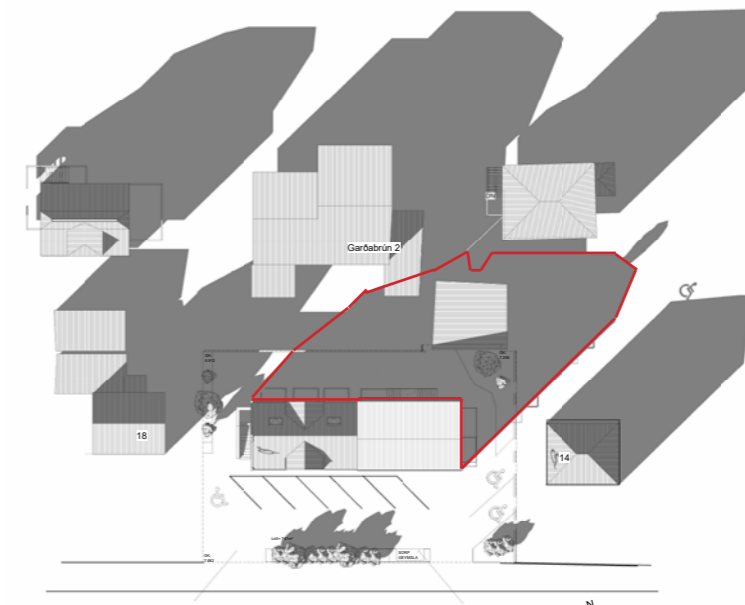
20. ágúst kl 16



20. mars kl 10



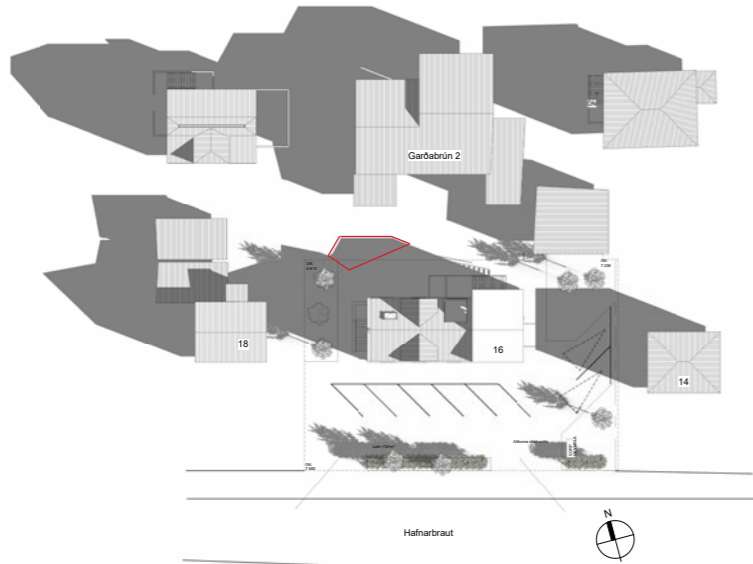
20. mars kl 13



20. mars kl 16

Skoðaðir voru dagarnir 20. mars og 20. ágúst til að sjá hvernig skuggi af hækkaðri viðbyggingu Hafnarbrautar 16 leggst á nágrenni byggingarinnar. 20. mars gefur góða mynd þegar sólin er lágt á lofti og skuggamyndun er því meiri en 20. ágúst þegar sólin er hærra á lofti og skuggavarpíð er minna. Rauða línan er sá skuggi sem hækkun á viðbyggingu Hafnarbrautar 16 myndi leiða af sér.

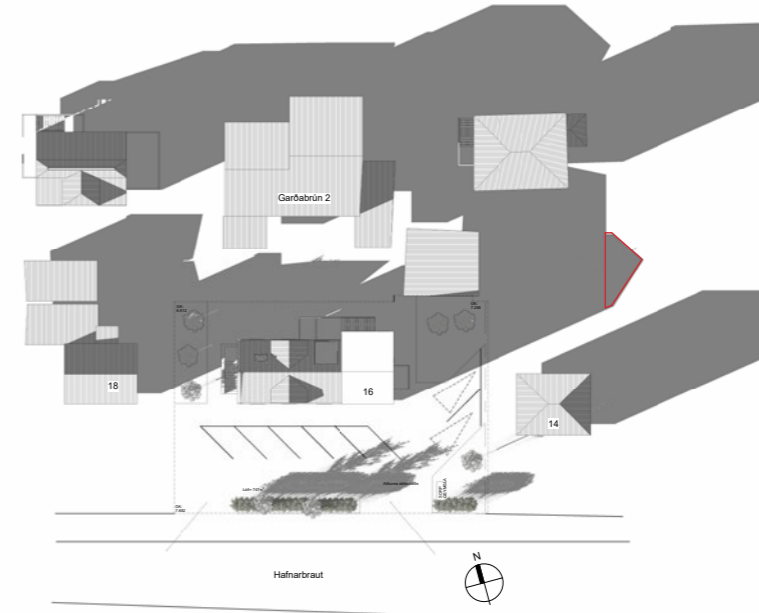
Samantekt af fyrri skuggarannsókn



20. ágúst kl 10



20. ágúst kl 13



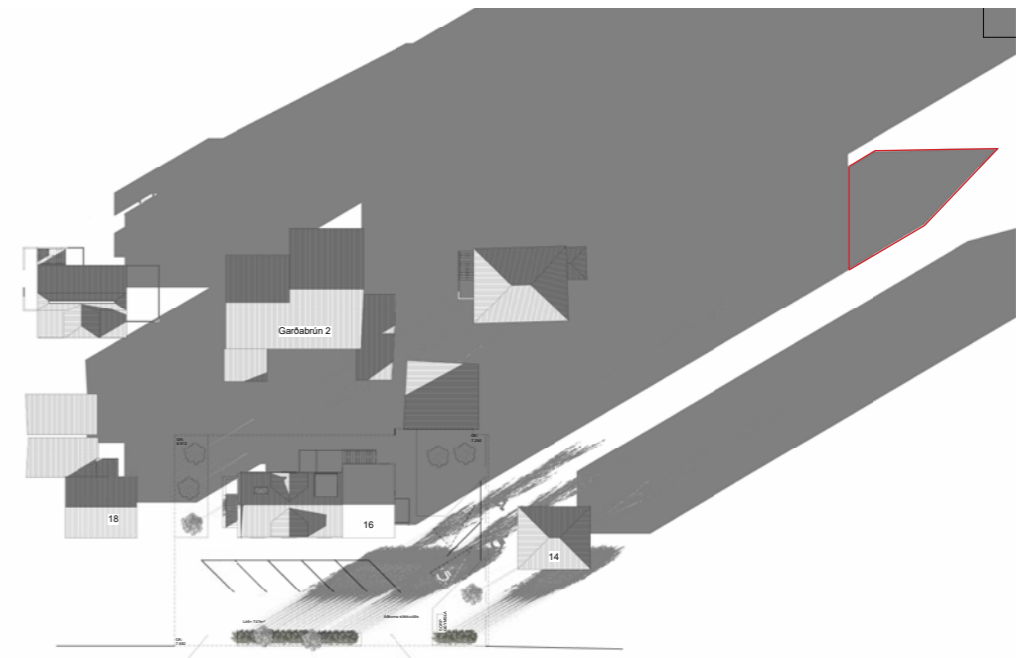
20. ágúst kl 18



20. mars kl 10



20. mars kl 13



20. mars kl 18

