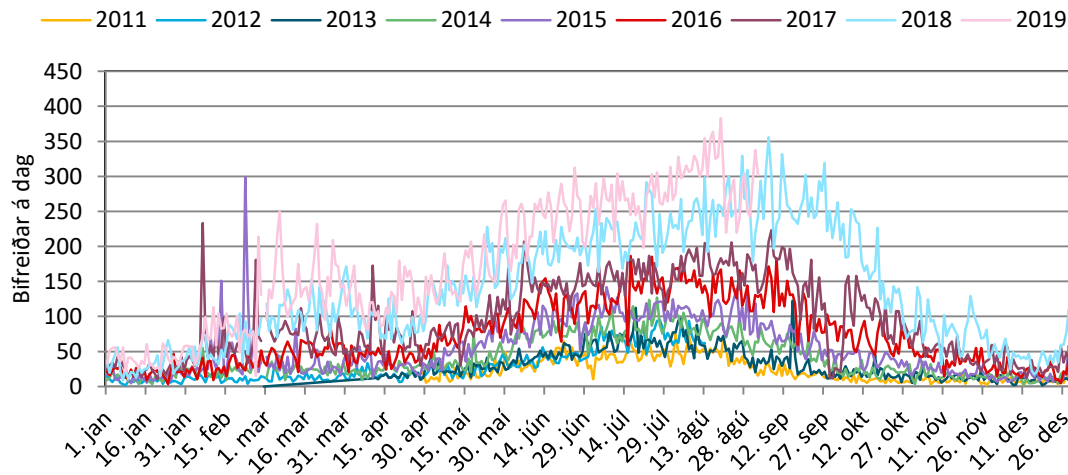


## Fjöldi bifreiða

## 1. tafla. Tímabil mælinga á ársgrundvelli.

Tímabil mælinga	2011	2012	2013	2014	2015	2016	2017	2018	2019
Frá:	28. apr.	1. jan.	10. apr.	1. jan.	1. jan.	1. jan.	1. jan.	1. jan.	1. jan.
Til:	13. ágú.	31. des.	31. des.	31. des.	31. des.	31. des.	31. des.	31. des.	1. jan.
Taldir dagar:	248	226	267	365	365	366	365	365	245
Daga vantar:	117	140	98	0	0	0	0	0	120



## 1. mynd. Bifreiðar á dag allt árið.

Mælitímabil má sjá í töflu hér til hliðar  
Notaðar voru ISO 8603 staðlaðar vikur til þess að minnka frávík milli ára. Hvert tímabil hefst á mánudegi tilgreindrar viku og endar á sunnudegi tilgreindrar viku. Tímabilið Hávetur nær yfir í 7. viku næsta árs.

## 2. tafla. Tímabil eftir ISO vikum.

Tímabil	ISO vikur
Síðla vetrar	8 - 15
Vetrarlok	16 - 22
Vor	23 - 27
<b>Háönn</b>	<b>28 - 32</b>
Haut	33 - 37
Framan af vetri	38 - 43
Hávetur	44 - 7

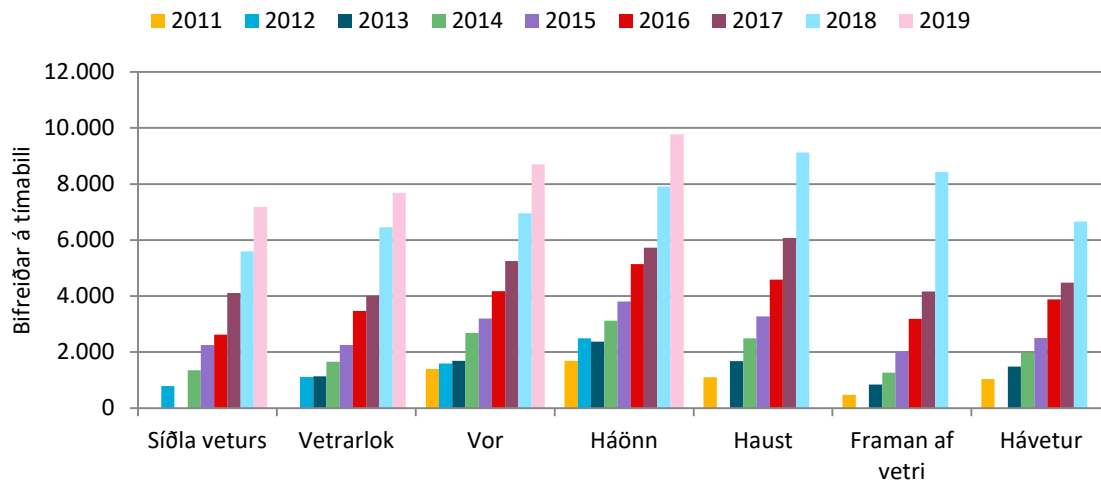
## 3. tafla. Meðalfjöldi bifreiða á dag.

	2011	2012	2013	2014	2015	2016	2017	2018	2019
Síðla vetrar		14		24	40	47	73	100	128
Vetrarlok		23	23	34	46	71	82	132	157
Vor	40	45	48	77	91	119	150	199	249
<b>Háönn</b>	<b>48</b>	<b>71</b>	<b>68</b>	<b>89</b>	<b>109</b>	<b>147</b>	<b>164</b>	<b>226</b>	<b>279</b>
Haut	32		48	71	94	131	174	261	
Framan af vetri	11		20	30	48	76	99	201	
Hávetur	9		13	18	22	35	40	59	

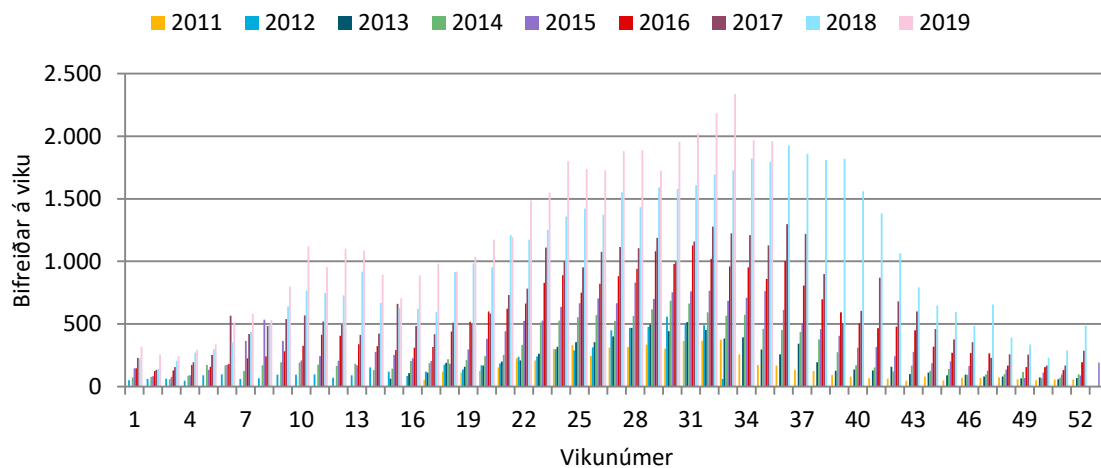
## 4. tafla. Heildarfjöldi bifreiða á tímabili.

	2011	2012	2013	2014	2015	2016	2017	2018	2019
Síðla vetrar		787		1.357	2.256	2.620	4.107	5.595	7.187
Vetrarlok		1.109	1.141	1.653	2.257	3.469	4.009	6.453	7.678
Vor	1.400	1.590	1.694	2.692	3.202	4.173	5.252	6.956	8.698
<b>Háönn</b>	<b>1.689</b>	<b>2.498</b>	<b>2.375</b>	<b>3.124</b>	<b>3.808</b>	<b>5.146</b>	<b>5.726</b>	<b>7.908</b>	<b>9.773</b>
Haut	1.105		1.674	2.489	3.274	4.582	6.076	9.129	
Framan af vetri	476		845	1.267	2.013	3.193	4.159	8.428	
Hávetur	1.036		1.487	1.986	2.509	3.882	4.483	6.660	
Samtals				14.568	19.318	27.066	33.813	51.129	
Breyting					33%	40%	25%	51%	

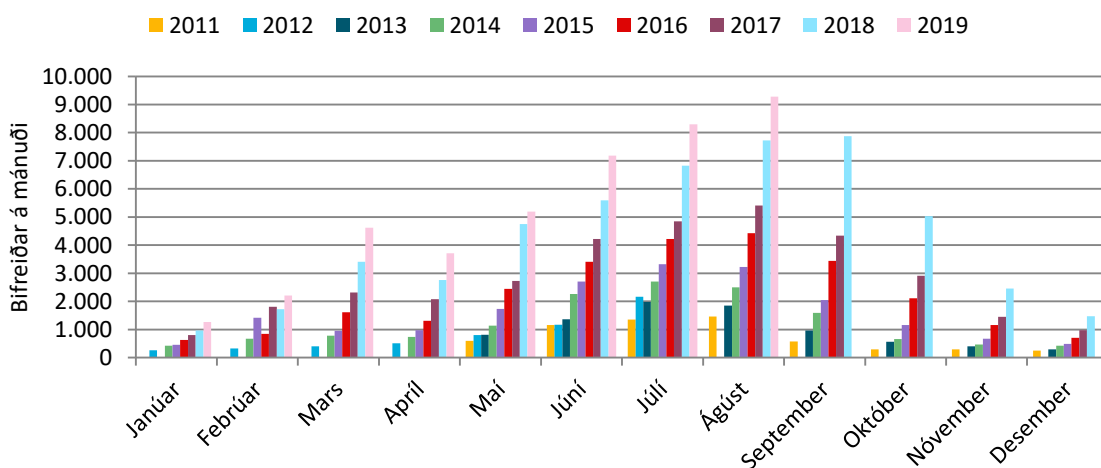
## Fjöldi bifreiða



## 2. mynd. Talningum dreift á tímabil.



## 3. mynd. Talningum dreift á vikur.



## 4. mynd. Talningum dreift á mánuði.

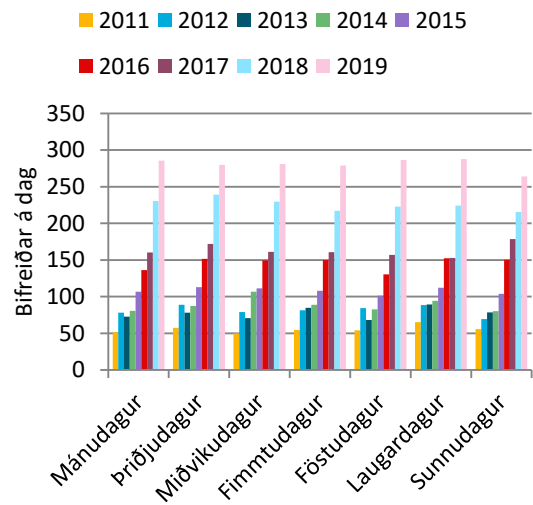
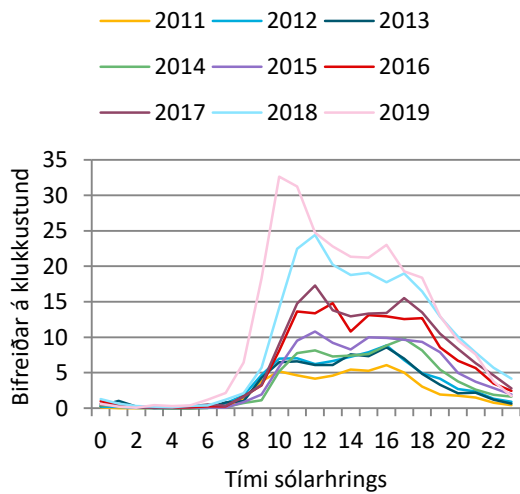
Fjöldi bifreiða

5. tafla. Talningar eftir árum.

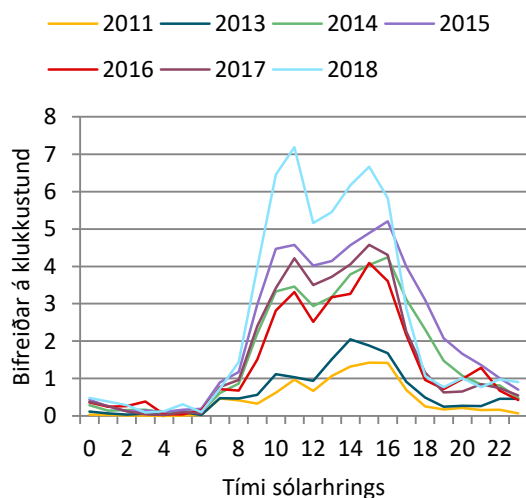
	Alls	Breyting
2011		
2012		
2013		
2014	14.327	
2015	19.014	33%
2016	26.126	37%
2017	33.633	29%
2018	50.289	50%
2019		

6. tafla. Hæstu talningar.

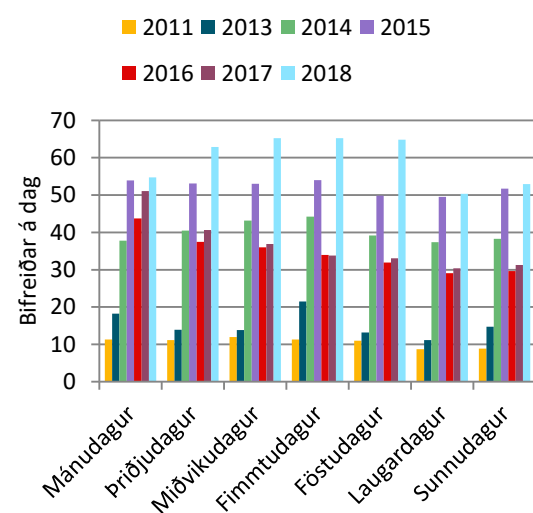
	Flestar bifreiðar	Þann
2011	75	2. ágúst
2012	95	27. júlí
2013	123	15. september
2014	127	26. júlí
2015	299	22. febrúar
2016	186	16. júlí
2017	233	6. febrúar
2018	356	6. september
2019	383	19. ágúst



5. mynd. Dreifing eftir tíma dags á Háönn.



6. mynd. Dreifing eftir vikudögum á Háönn.



7. mynd. Dreifing eftir tíma dags um Hávetur.

8. mynd. Dreifing eftir vikudögum, Hávetur.

Reiknað er með: 2,8 manns í hverri bifreið.

**7. tafla. Meðalfjöldi gesta á dag.**

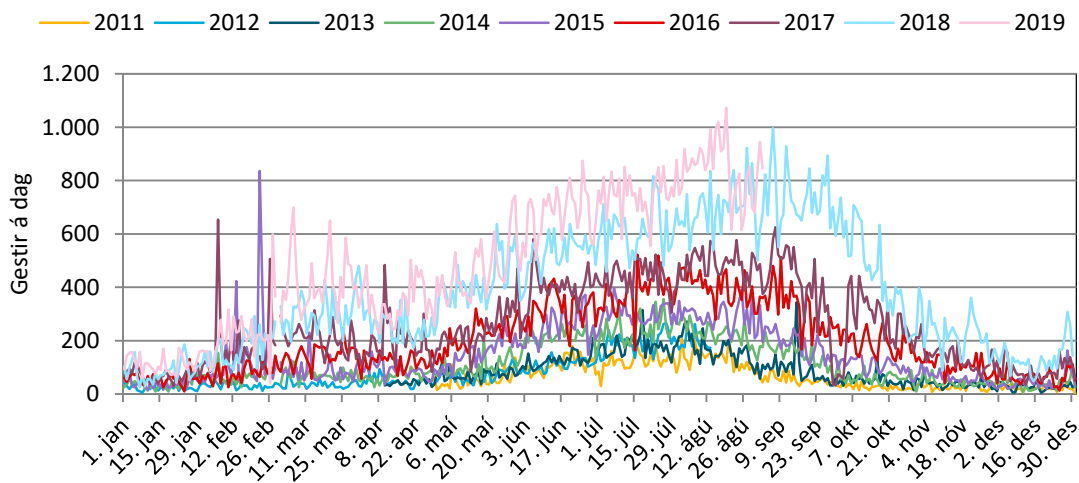
	2011	2012	2013	2014	2015	2016	2017	2018	2019
Síðla vetrar		39		68	113	131	205	280	359
Vetrarlok		63	65	94	129	198	229	369	439
Vor	112	127	135	215	256	334	420	556	696
<b>Háönn</b>	<b>135</b>	<b>200</b>	<b>190</b>	<b>250</b>	<b>305</b>	<b>412</b>	<b>458</b>	<b>633</b>	<b>782</b>
Haust	88		134	199	262	367	486	730	
Framan af vetri	32		56	84	134	213	277	562	
Hávetur	26		37	50	63	97	112	166	

**8. tafla. Heildarfjöldi gesta yfir sumarið.**

	2011	2012	2013	2014	2015	2016	2017	2018	2019
Vor	3.919	4.452	4.742	7.536	8.965	11.684	14.705	19.477	24.355
<b>Háönn</b>	<b>4.729</b>	<b>6.994</b>	<b>6.650</b>	<b>8.747</b>	<b>10.663</b>	<b>14.410</b>	<b>16.034</b>	<b>22.142</b>	<b>27.366</b>
Haust	3.094		4.686	6.970	9.167	12.831	17.014	25.563	
Samtals	11.742		16.078	23.253	28.794	38.925	47.752	67.181	
Breyting				45%	24%	35%	23%	41%	

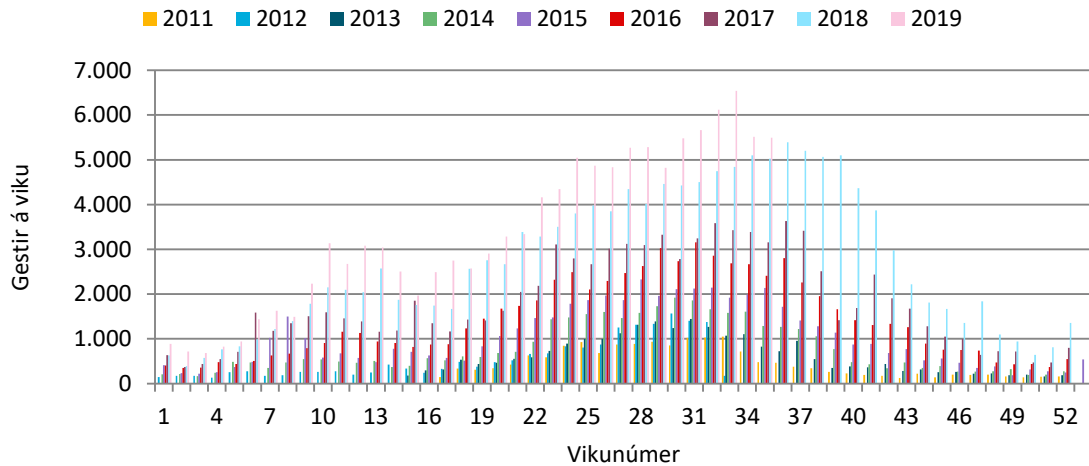
**9. tafla. Heildarfjöldi gesta á ári.**

	2011	2012	2013	2014	2015	2016	2017	2018	2019
Síðla vetrar		2.204		3.799	6.316	7.335	11.498	15.665	20.124
Vetrarlok		3.105	3.195	4.628	6.319	9.714	11.226	18.068	21.498
Vor	3.919	4.452	4.742	7.536	8.965	11.684	14.705	19.477	24.355
<b>Háönn</b>	<b>4.729</b>	<b>6.994</b>	<b>6.650</b>	<b>8.747</b>	<b>10.663</b>	<b>14.410</b>	<b>16.034</b>	<b>22.142</b>	<b>27.366</b>
Haust	3.094		4.686	6.970	9.167	12.831	17.014	25.563	
Framan af vetri	1.331		2.366	3.549	5.637	8.939	11.646	23.599	
Hávetur	2.901		4.163	5.560	7.024	10.871	12.552	18.647	
Samtals				40.789	54.091	75.784	94.675	143.161	
Breyting					33%	40%	25%	51%	

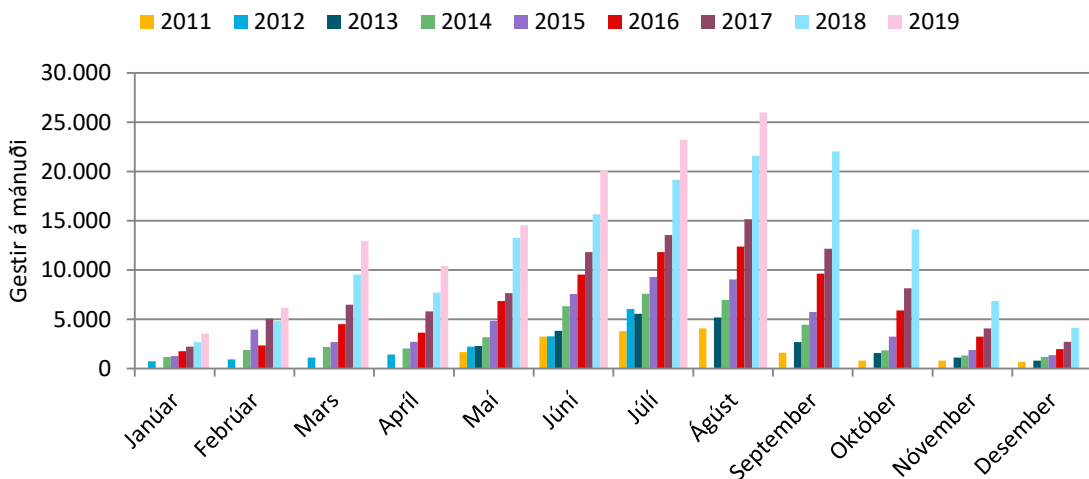


**9. mynd. Gestir á dag allt árið.**

## Fjöldi gesta



## 10. mynd. Gestir á viku.



## 11. mynd. Gestir á mánuði.

## 10. tafla. Gestir á mánuði.

	2011	2012	2013	2014	2015	2016	2017	2018	2019
Janúar		739		1.179	1.259	1.765	2.226	2.684	3.536
Febrúar		921		1.871	3.952	2.351	5.045	4.801	6.185
Mars		1.120		2.175	2.671	4.516	6.476	9.548	12.937
Apríl		1.413		2.043	2.722	3.651	5.807	7.709	10.403
Maí	1.652	2.234	2.272	3.171	4.846	6.841	7.645	13.283	14.538
Júní	3.238	3.279	3.812	6.335	7.559	9.529	11.816	15.659	20.118
Júlí	3.781	6.049	5.541	7.578	9.301	11.819	13.555	19.128	23.244
Ágúst	4.081		5.181	6.982	9.032	12.376	15.147	21.617	25.988
September	1.617		2.698	4.446	5.736	9.641	12.155	22.049	
Október	811		1.567	1.845	3.251	5.890	8.158	14.096	
Nóvember	813		1.110	1.313	1.867	3.245	4.068	6.861	
Desember	687		805	1.179	1.364	1.970	2.713	4.122	
Alls:				40.117	53.562	73.593	94.810	141.556	
Breyting milli ára:					13.446	20.031	21.216	46.747	
Breyting (%):					33,5%	37,4%	28,8%	49,3%	
Taldir dagar:	248	226	267	365	365	366	365	365	245
Daga vantar:	117	140	98	0	0	0	0	0	120

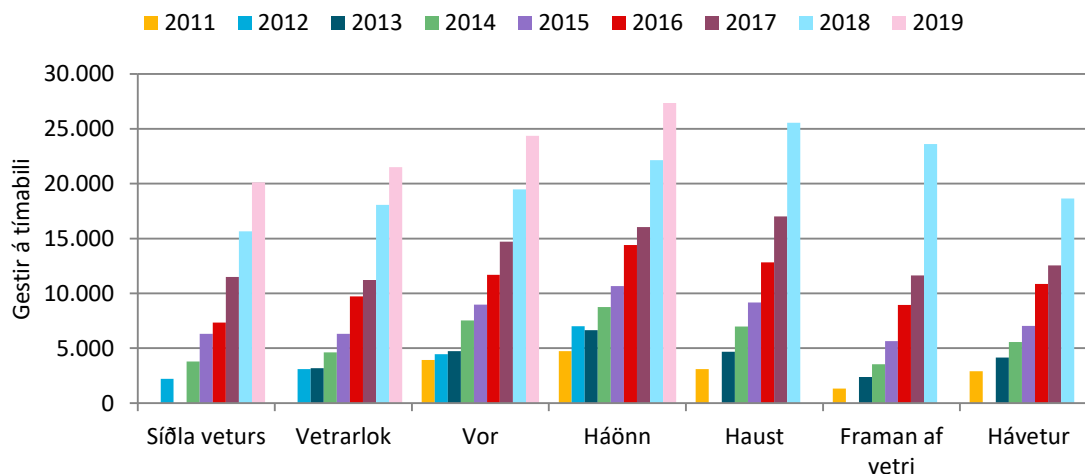
## Fjöldi gesta

## 11. tafla. Breyting milli ára (gestir).

	2012	2013	2014	2015	2016	2017	2018	2019
Janúar				80	506	461	458	852
Febrúar				2.082	-1.601	2.694	-243	1.384
Mars				496	1.845	1.960	3.072	3.389
Apríl				679	929	2.156	1.903	2.694
Maí	582	38	899	1.675	1.995	804	5.637	1.256
Júní	41	533	2.523	1.224	1.970	2.287	3.844	4.458
Júlí	2.268	-508	2.037	1.723	2.517	1.736	5.573	4.116
Ágúst			1.801	2.050	3.344	2.771	6.470	4.372
September			1.748	1.291	3.904	2.514	9.894	
Október			278	1.406	2.639	2.268	5.938	
Nóvember			203	554	1.377	823	2.793	
Desember			374	186	605	743	1.409	
Breyting:				13.446	20.031	21.216	46.747	

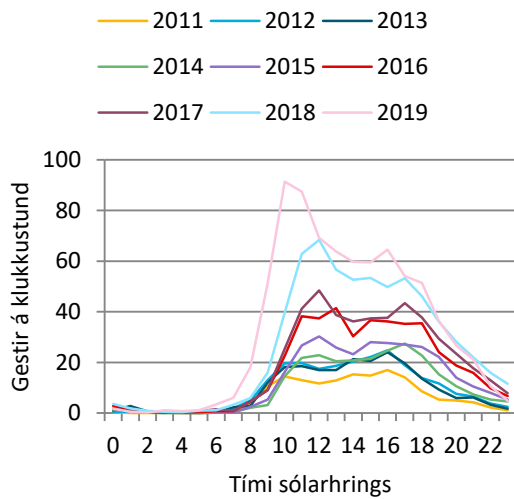
## 12. tafla. Hlutfallsleg breyting milli ára (gestir).

	2012	2013	2014	2015	2016	2017	2018	2019
Janúar				7%	40%	26%	21%	32%
Febrúar				111%	-41%	115%	-5%	29%
Mars				23%	69%	43%	47%	35%
Apríl				33%	34%	59%	33%	35%
Maí	35%	2%	40%	53%	41%	12%	74%	9%
Júní	1%	16%	66%	19%	26%	24%	33%	28%
Júlí	60%	-8%	37%	23%	27%	15%	41%	22%
Ágúst			35%	29%	37%	22%	43%	20%
September			65%	29%	68%	26%	81%	
Október			18%	76%	81%	38%	73%	
Nóvember			18%	42%	74%	25%	69%	
Desember			46%	16%	44%	38%	52%	
Breyting (%):				33,5%	37,4%	28,8%	49,3%	

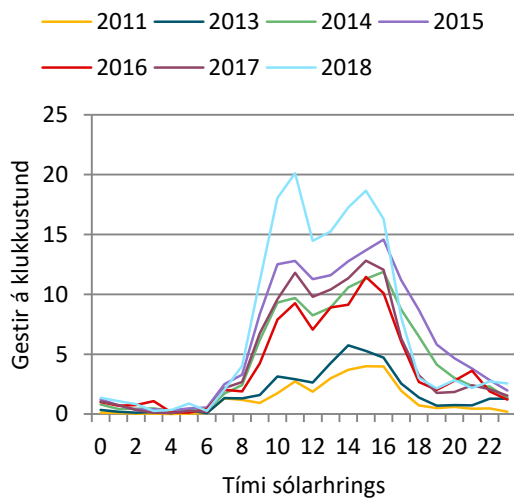


## 12. mynd. Gestir á tímabili.

# Litla-Horn



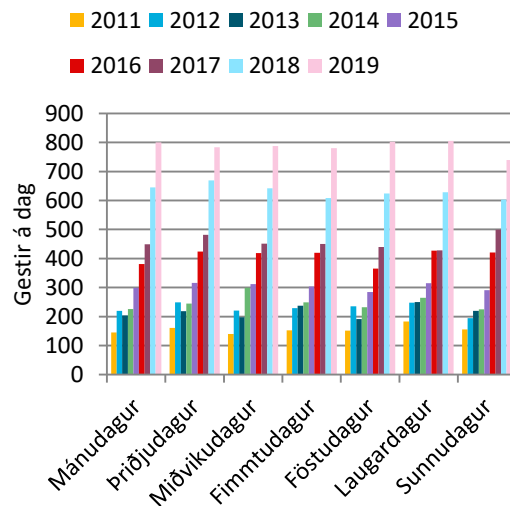
13. mynd. Dreifing gesta eftir tíma dags á Háönn.



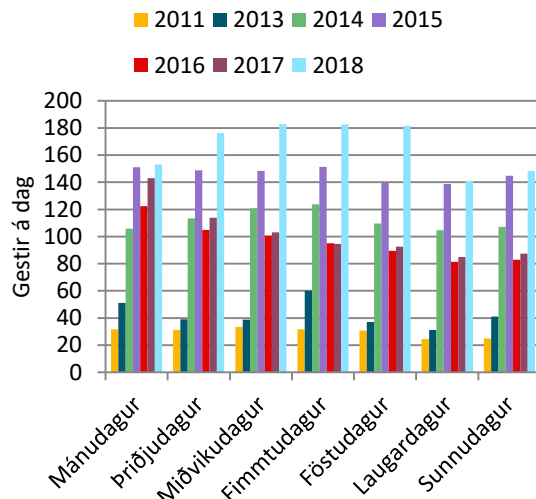
15. mynd. Dreifing gesta eftir tíma dags um Hávetur.

Kvörðuð gögn

Fjöldi gesta



14. mynd. Dreifing gesta eftir vikudögum á Háönn.



16. mynd. Dreifing gesta eftir vikudögum um Hávetur.